



February 20 2006

BDE-CVS-F

CALIBRATION SET AND SUPPORT SOLUTIONS FOR THE ANALYSIS OF POLYBROMINATED DIPHENYL ETHERS

WELLINGTON recently introduced the **BFR-CVS** calibration set which consists of 46 native brominated flame retardants (BFRs) in addition to 25 mass-labelled compounds. This series of calibration and support solutions has permitted laboratories to pursue more detailed analyses for BFRs in environmental samples.

However, many laboratories have focussed thier attention towards the analysis of the major PBDE congeners introduced into the environment through the commercial use of the technical penta- and octa-BDE formulations. As a result, their analyses require a simpler set of calibration and support solutions.

WELLINGTON has now prepared **BDE-CVS-F**, a calibration set and support solutions that targets the 9 major native PBDEs that are present in the technical mixtures.

Catalogue Number

Description

- | | |
|--------------------|--|
| • BDE-CVS-F | PBDE HRGC/HRMS Calibration Solutions
<i>1 kit; 5 x 200 µl ampoules</i> |
| • BDE-MXF | Native PBDE Stock
<i>1.2 ml ampoule</i> |
| • MBDE-MXFS | Mass-Labelled PBDE Surrogate Stock
<i>1.2 ml ampoule</i> |
| • MBDE-MXFR | Mass-Labelled PBDE Recovery Stock
<i>1.2 ml ampoule</i> |

The components and concentrations of these products can be found on the following pages. All of these products come with a Certificate of Analysis (C of A) that include HGRC/LRMS and/or HRGC/HRMS data as appropriate.

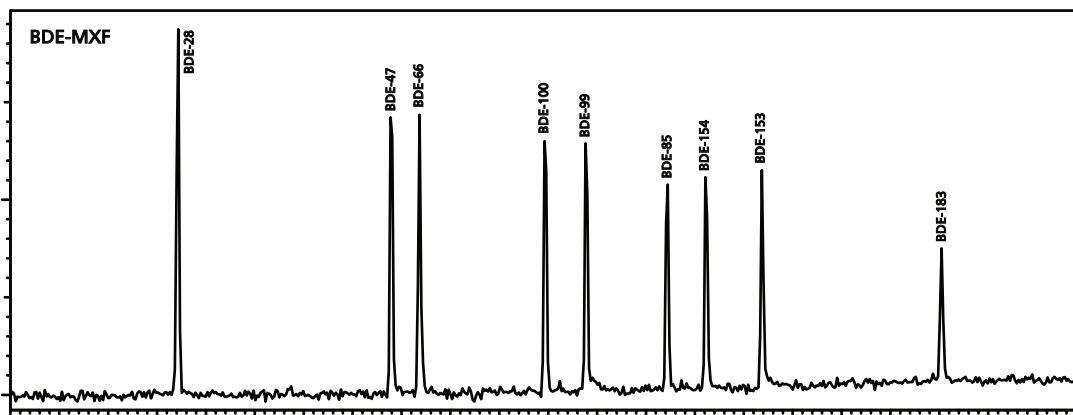
Please contact your local distributor or info@well-labs.com for pricing and delivery.

AND...Please continue to visit our website (www.well-labs.com) for more new product releases.

BDE-CVS-F

Catalogue Number	Product (toluene solution)	Qty/Conc
BDE-CVS-F	BDE-CVS-F	1 kit
	Calibration Solutions CS1-CS5	(5 ampoules)
BDE-CS1-F	CS1	200 µl
BDE-CS2-F	CS2	200 µl
BDE-CS3-F	CS3	200 µl
BDE-CS4-F	CS4	200 µl
BDE-CS5-F	CS5	200 µl

NATIVE PBDE CONGENERS	IUPAC	BDE-CS1-	BDE-CS2-	BDE-CS3-	BDE-CS4-	BDE-CS5-
		F	F	F	F	F
		(ng/ml)	(ng/ml)	(ng/ml)	(ng/ml)	(ng/ml)
2,4,4'-Tribromodiphenyl ether	28	1.0	5.0	25	100	500
2,2',4,4'-Tetrabromodiphenyl ether	47	1.0	5.0	25	100	500
2,3',4,4'-Tetrabromodiphenyl ether	66	1.0	5.0	25	100	500
2,2',3,4,4'-Pentabromodiphenyl ether	85	1.0	5.0	25	100	500
2,2',4,4',5-Pentabromodiphenyl ether	99	1.0	5.0	25	100	500
2,2',4,4',6-Pentabromodiphenyl ether	100	1.0	5.0	25	100	500
2,2',4,4',5,5'-Hexabromodiphenyl ether	153	1.0	5.0	25	100	500
2,2',4,4',5,6'-Hexabromodiphenyl ether	154	1.0	5.0	25	100	500
2,2',3,4,4',5',6-Heptabromodiphenyl ether	183	1.0	5.0	25	100	500
MASS-LABELLED PBDE SURROGATE STANDARDS						
2,4,4'-Tribromo[¹³ C ₁₂]diphenyl ether	28L	20	20	20	20	20
2,2',4,4'-Tetrabromo[¹³ C ₁₂]diphenyl ether	47L	20	20	20	20	20
2,2',4,4',5-Pentabromo[¹³ C ₁₂]diphenyl ether	99L	20	20	20	20	20
2,2',4,4',6-Pentabromo[¹³ C ₁₂]diphenyl ether	100L	20	20	20	20	20
2,2',4,4',5,5'-Hexabromo[¹³ C ₁₂]diphenyl ether	153L	20	20	20	20	20
2,2',4,4',5,6'-Hexabromo[¹³ C ₁₂]diphenyl ether	154L	20	20	20	20	20
2,2',3,4,4',5',6-Heptabromo[¹³ C ₁₂]diphenyl ether	183L	20	20	20	20	20
MASS-LABELLED PBDE RECOVERY STANDARDS						
3,3',4,4'-Tetrabromo[¹³ C ₁₂]diphenyl ether	77L	20	20	20	20	20
2,2',3,4,4',5'-Hexabromo[¹³ C ₁₂]diphenyl ether	138L	20	20	20	20	20



BDE-MXF; HRGC/LRMS TIC Chromatogram



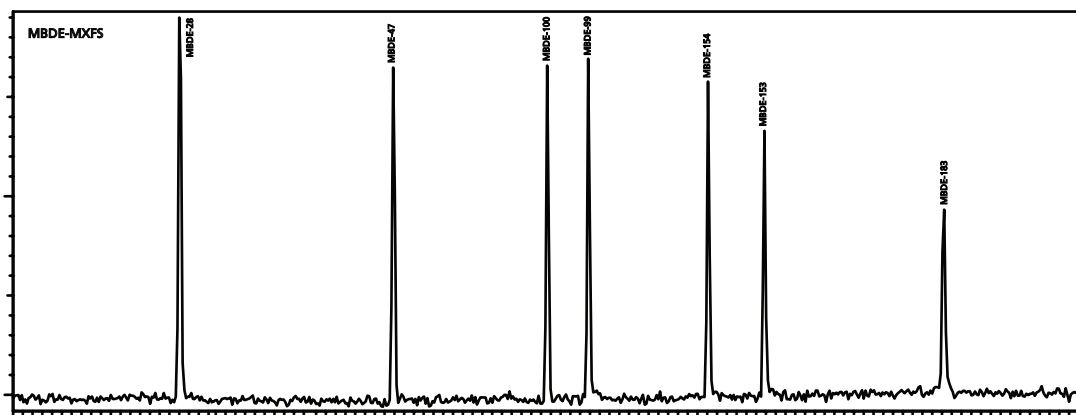
BDE-CVS-F

Catalogue Number	Product (toluene solution)	Qty/Conc		
MBDE-MXFS	Mass-Labelled PBDE Surrogate Stock	1.2 ml		
MBDE-MXFR	Mass-Labelled PBDE Recovery Stock	1.2 ml		
BDE-MXF	Native PBDE Stock	1.2 ml		

NATIVE PBDE CONGENERS	IUPAC	MBDE-MXFS (ng/ml)	MBDE-MXFR (ng/ml)	BDE-MXF (ng/ml)
2,4,4'-Tribromodiphenyl ether	28	—	—	2000
2,2',4,4'-Tetrabromodiphenyl ether	47	—	—	2000
2,3',4,4'-Tetrabromodiphenyl ether	66	—	—	2000
2,2',3,4,4'-Pentabromodiphenyl ether	85	—	—	2000
2,2',4,4',5-Pentabromodiphenyl ether	99	—	—	2000
2,2',4,4',6-Pentabromodiphenyl ether	100	—	—	2000
2,2',4,4',5,5'-Hexabromodiphenyl ether	153	—	—	2000
2,2',4,4',5,6'-Hexabromodiphenyl ether	154	—	—	2000
2,2',3,4,4',5',6-Heptabromodiphenyl ether	183	—	—	2000

MASS-LABELLED PBDE SURROGATE STANDARDS				
2,4,4'-Tribromo[¹³ C ₁₂]diphenyl ether	28L	2000	—	—
2,2',4,4'-Tetrabromo[¹³ C ₁₂]diphenyl ether	47L	2000	—	—
2,2',4,4',5-Pentabromo[¹³ C ₁₂]diphenyl ether	99L	2000	—	—
2,2',4,4',6-Pentabromo[¹³ C ₁₂]diphenyl ether	100L	2000	—	—
2,2',4,4',5,5'-Hexabromo[¹³ C ₁₂]diphenyl ether	153L	2000	—	—
2,2',4,4',5,6'-Hexabromo[¹³ C ₁₂]diphenyl ether	154L	2000	—	—
2,2',3,4,4',5',6-Heptabromo[¹³ C ₁₂]diphenyl ether	183L	2000	—	—

MASS-LABELLED PBDE RECOVERY STANDARDS				
3,3',4,4'-Tetrabromo[¹³ C ₁₂]diphenyl ether	77L	—	2000	—
2,2',3,4,4',5'-Hexabromo[¹³ C ₁₂]diphenyl ether	138L	—	2000	—



MBDE-MXFS; HRGC/LRMS TIC Chromatogram

