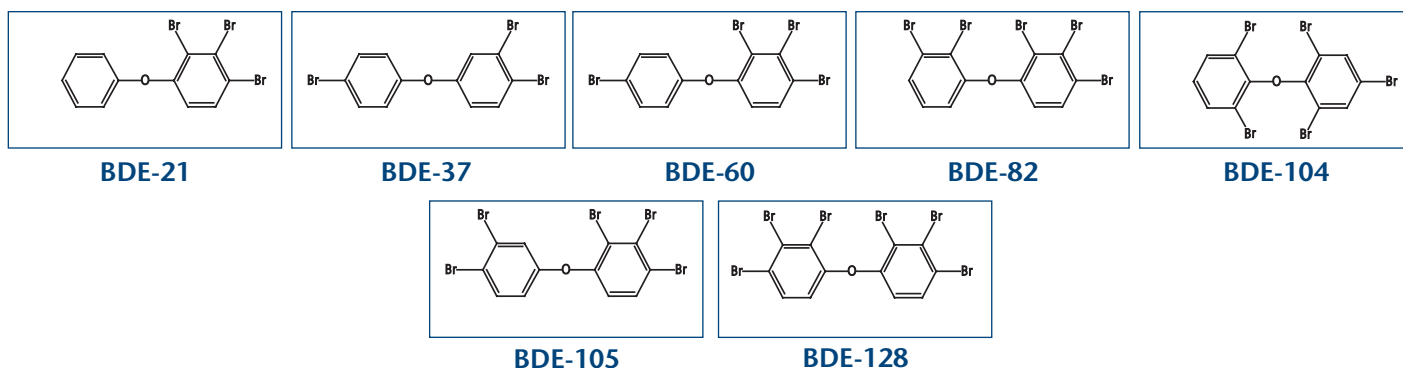


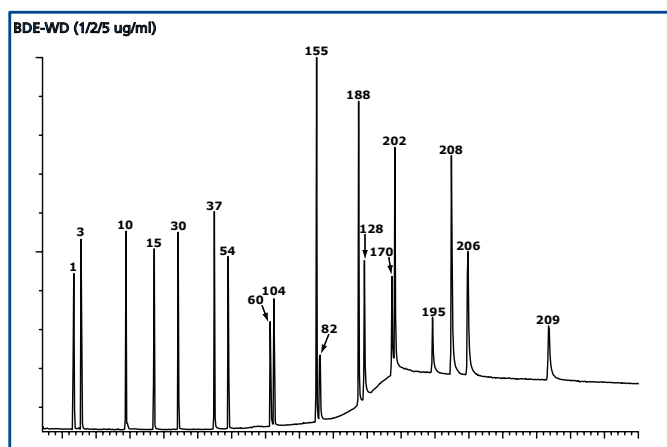


NEW NATIVE POLYBROMINATED DIPHENYL ETHERS AND A PBDE WINDOW DEFINING SOLUTION/MIXTURE

There are a possible 209 PBDE congeners that could be found in environmental samples. In trying to demonstrate the presence, persistence, transport, bioaccumulation and degradation of some of these compounds in the environment, analytical laboratories have developed more complex and thorough methods of analysis. As a result, additional PBDE standards and more complete calibration sets are becoming commercially available to aid the analytical chemist. As these PBDE analysis techniques become more intricate, a need has arisen for a solution to set retention time windows for the PBDE congener groups.



The addition of 7 new native PBDE congeners has allowed WELLINGTON to prepare a solution/mixture to be used in setting of the PBDE congener group windows with a 30m 95% dimethyl/5% diphenyl polysiloxane, crossbonded, high temperature capillary column.



The components and concentrations of **BDE-WD** can be seen on the following page.
In addition, an updated list of our native PBDEs is also attached.
Please contact your local distributor or info@well-labs.com for pricing and delivery.

AND...Please continue to visit our website (www.well-labs.com) for a complete listing of new product releases.

PBDE WINDOW DEFINING SOLUTION/MIXTURE

Catalogue Number	Product (nonane/toluene solution)	Qty/Conc		
BDE-WD	PBDE Window Defining Solution/Mixture	1.2 ml		
		FIRST ELUTER (IUPAC)	LAST ELUTER (IUPAC)	CONCENTRATION (µg/ml each)
Bromodiphenyl ethers		1	3	1.0
Dibromodiphenyl ethers		10	15	1.0
Tribromodiphenyl ethers		30	37	1.0
Tetrabromodiphenyl ethers		54	60	1.0
Pentabromodiphenyl ethers		104	82	1.0
Hexabromodiphenyl ethers		155	128	2.0
Heptabromodiphenyl ethers		188	170	2.0
Octabromodiphenyl ethers		202	195	2.0
Nonabromodiphenyl ethers		208	206	5.0
Decabromodiphenyl ether			209	5.0

NATIVE BROMINATED DIPHENYL ETHERS (PBDEs)

Catalogue Number	Product (nonane solution)	Qty/Conc	
BDE-1	2-Bromodiphenyl ether	1.2 ml	50 µg/ml
BDE-2	3-Bromodiphenyl ether	1.2 ml	50 µg/ml
BDE-3	4-Bromodiphenyl ether	1.2 ml	50 µg/ml
BDE-7	2,4-Dibromodiphenyl ether	1.2 ml	50 µg/ml
BDE-10	2,6-Dibromodiphenyl ether	1.2 ml	50 µg/ml
BDE-15	4,4'-Dibromodiphenyl ether	1.2 ml	50 µg/ml
BDE-17	2,2',4-Tribromodiphenyl ether	1.2 ml	50 µg/ml
NEW BDE-21	2,3,4-Tribromodiphenyl ether	1.2 ml	50 µg/ml
BDE-28	2,4,4'-Tribromodiphenyl ether	1.2 ml	50 µg/ml
BDE-30	2,4,6-Tribromodiphenyl ether	1.2 ml	50 µg/ml
NEW BDE-37	3,4,4'-Tribromodiphenyl ether	1.2 ml	50 µg/ml
BDE-47	2,2',4,4'-Tetrabromodiphenyl ether	1.2 ml	50 µg/ml
BDE-49	2,2',4,5'-Tetrabromodiphenyl ether	1.2 ml	50 µg/ml
BDE-54	2,2',6,6'-Tetrabromodiphenyl ether	1.2 ml	50 µg/ml
NEW BDE-60	2,3,4,4'-Tetrabromodiphenyl ether	1.2 ml	50 µg/ml
BDE-66	2,3',4,4'-Tetrabromodiphenyl ether	1.2 ml	50 µg/ml
BDE-71	2,3',4',6-Tetrabromodiphenyl ether	1.2 ml	50 µg/ml
BDE-77	3,3',4,4'-Tetrabromodiphenyl ether	1.2 ml	50 µg/ml
NEW BDE-82	2,2',3,3',4-Pentabromodiphenyl ether	1.2 ml	50 µg/ml
BDE-85	2,2',3,4,4'-Pentabromodiphenyl ether	1.2 ml	50 µg/ml
BDE-99	2,2',4,4',5-Pentabromodiphenyl ether	1.2 ml	50 µg/ml
BDE-100	2,2',4,4',6-Pentabromodiphenyl ether	1.2 ml	50 µg/ml
NEW BDE-104	2,2',4,6,6'-Pentabromodiphenyl ether	1.2 ml	50 µg/ml



NATIVE BROMINATED DIPHENYL ETHERS

	Catalogue Number	Product (nonane solution)	Qty/Conc
NEW	BDE-105	2,3,3',4,4'-Pentabromodiphenyl ether	1.2 ml 50 µg/ml
	BDE-119	2,3',4,4',6-Pentabromodiphenyl ether	1.2 ml 50 µg/ml
	BDE-126	3,3',4,4',5-Pentabromodiphenyl ether	1.2 ml 50 µg/ml
NEW	BDE-128	2,2',3,3',4,4'-Hexabromodiphenyl ether	1.2 ml 50 µg/ml
	BDE-138	2,2',3,4,4',5'-Hexabromodiphenyl ether	1.2 ml 50 µg/ml
	BDE-139	2,2',3,4,4',6-Hexabromodiphenyl ether	1.2 ml 50 µg/ml
	BDE-140	2,2',3,4,4',6'-Hexabromodiphenyl ether	1.2 ml 50 µg/ml
	BDE-149	2,2',3,4',5',6-Hexabromodiphenyl ether	1.2 ml 50 µg/ml
	BDE-153	2,2',4,4',5,5'-Hexabromodiphenyl ether	1.2 ml 50 µg/ml
	BDE-154	2,2',4,4',5,6'-Hexabromodiphenyl ether	1.2 ml 50 µg/ml
	BDE-155	2,2',4,4',6,6'-Hexabromodiphenyl ether	1.2 ml 50 µg/ml
	BDE-156	2,3,3',4,4',5-Hexabromodiphenyl ether	1.2 ml 50 µg/ml
	BDE-169	3,3',4,4',5,5'-Hexabromodiphenyl ether	1.2 ml 50 µg/ml
	BDE-170	2,2',3,3',4,4',5-Heptabromodiphenyl ether	1.2 ml 50 µg/ml
	BDE-171	2,2',3,3',4,4',6-Heptabromodiphenyl ether	1.2 ml 50 µg/ml
	BDE-176	2,2',3,3',4,6,6'-Heptabromodiphenyl ether	1.2 ml 50 µg/ml
	BDE-177	2,2',3,3',4',5,6-Heptabromodiphenyl ether	1.2 ml 50 µg/ml
	BDE-179	2,2',3,3',5,6,6'-Heptabromodiphenyl ether	1.2 ml 50 µg/ml
	BDE-180	2,2',3,4,4',5,5'-Heptabromodiphenyl ether	1.2 ml 50 µg/ml
	BDE-181	2,2',3,4,4',5,6-Heptabromodiphenyl ether	1.2 ml 50 µg/ml
	BDE-182	2,2',3,4,4',5,6'-Heptabromodiphenyl ether	1.2 ml 50 µg/ml
	BDE-183	2,2',3,4,4',5',6-Heptabromodiphenyl ether	1.2 ml 50 µg/ml
	BDE-184	2,2',3,4,4',6,6'-Heptabromodiphenyl ether	1.2 ml 50 µg/ml
	BDE-188	2,2',3,4',5,6,6'-Heptabromodiphenyl ether	1.2 ml 50 µg/ml
	BDE-189	2,3,3',4,4',5,5'-Heptabromodiphenyl ether	1.2 ml 50 µg/ml
	BDE-191*	2,3,3',4,4',5',6-Heptabromodiphenyl ether	1.2 ml 50 µg/ml
	BDE-194*	2,2',3,3',4,4',5,5'-Octabromodiphenyl ether	1.2 ml 50 µg/ml
	BDE-195*	2,2',3,3',4,4',5,6-Octabromodiphenyl ether	1.2 ml 50 µg/ml
	BDE-196*	2,2',3,3',4,4',5,6'-Octabromodiphenyl ether	1.2 ml 50 µg/ml
	BDE-197*	2,2',3,3',4,4',6,6'-Octabromodiphenyl ether	1.2 ml 50 µg/ml
	BDE-200*	2,2',3,3',4,5,6,6'-Octabromodiphenyl ether	1.2 ml 50 µg/ml
	BDE-201*	2,2',3,3',4,5',6,6'-Octabromodiphenyl ether	1.2 ml 50 µg/ml
	BDE-202*	2,2',3,3',5,5',6,6'-Octabromodiphenyl ether	1.2 ml 50 µg/ml
	BDE-203*	2,2',3,4,4',5,5',6-Octabromodiphenyl ether	1.2 ml 50 µg/ml
	BDE-204*	2,2',3,4,4',5,6,6'-Octabromodiphenyl ether	1.2 ml 50 µg/ml
	BDE-205*	2,3,3',4,4',5,5',6-Octabromodiphenyl ether	1.2 ml 50 µg/ml
	BDE-206*	2,2',3,3',4,4',5,5',6-Nonabromodiphenyl ether	1.2 ml 50 µg/ml
	BDE-207*	2,2',3,3',4,4',5,6,6'-Nonabromodiphenyl ether	1.2 ml 50 µg/ml
	BDE-208*	2,2',3,3',4,5,5',6,6'-Nonabromodiphenyl ether	1.2 ml 50 µg/ml
	BDE-209*	Decabromodiphenyl ether	1.2 ml 50 µg/ml

* Toluene solution

