



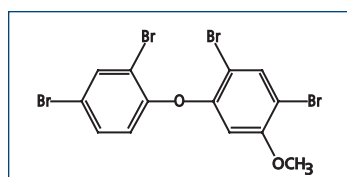
September 14 2005

METHOXY- and HYDROXY-PBDEs; NATIVE AND MASS-LABELLED

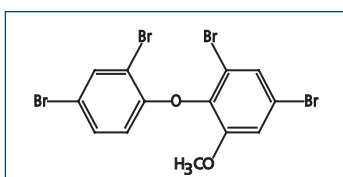
Methoxylated and hydroxylated polybrominated diphenyl ethers (MeO-PBDEs and OH-PBDEs) have been reported to be found in aquatic and terrestrial wildlife and human plasma. Many of these compounds are known to be naturally-occurring while others are thought to be either metabolic or environmental transformation products of the commercially produced PBDEs.

Although there have been a number of studies about the presence of these compounds in our environment, their identification and quantitation has been hampered by the lack of appropriate reference standards.

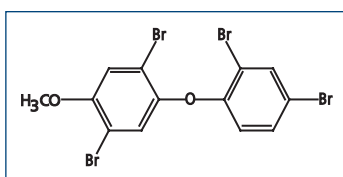
In an effort to improve this situation, **WELLINGTON** has now added **8 native methoxy-PBDEs** to our product line.



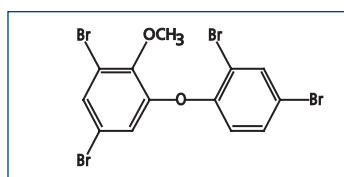
5MBDE47



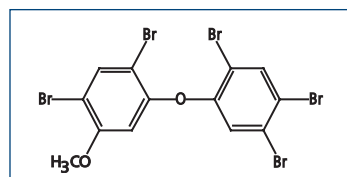
6MBDE47



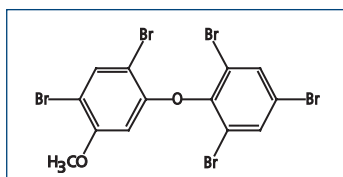
4PMBDE49



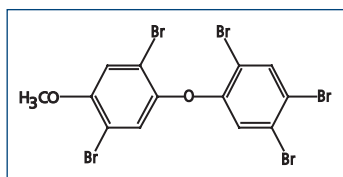
2PMBDE68



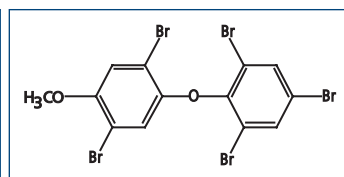
5PMBDE99



5PMBDE100

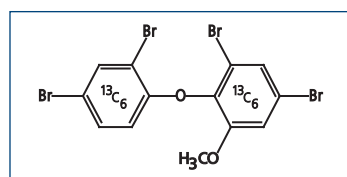


4PMBDE101

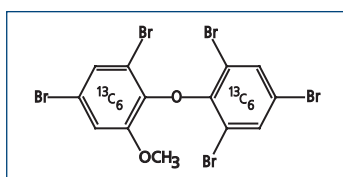


4PMBDE103

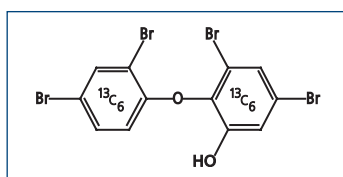
To afford laboratories with the means to produce more accurate trace level analyses, **WELLINGTON** has also added **2 mass-labeled methoxy-BDEs** and **2 mass-labeled hydroxy-BDEs** to our inventory.



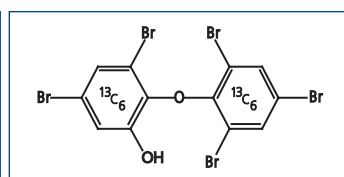
M6MBDE47



M6PMBDE100



M6HBDE47



M6PHBDE100

NATIVE METHOXY-BROMINATED DIPHENYL ETHERS (MeO-PBDEs)

Catalogue Number	Product (nonane solution)	Qty/Conc
5MBDE47	2,2',4,4'-Tetrabromo-5-methoxydiphenyl ether	1.2 ml 50 µg/ml
6MBDE47	2,2',4,4'-Tetrabromo-6-methoxydiphenyl ether	1.2 ml 50 µg/ml
4PMBDE49	2,2',4,5'-Tetrabromo-4'-methoxydiphenyl ether	1.2 ml 50 µg/ml
2PMBDE68	2,3',4,5'-Tetrabromo-2'-methoxydiphenyl ether	1.2 ml 50 µg/ml
5PMBDE99	2,2',4,4',5-Pentabromo-5'-methoxydiphenyl ether	1.2 ml 50 µg/ml
5PMBDE100	2,2',4,4',6-Pentabromo-5'-methoxydiphenyl ether	1.2 ml 50 µg/ml
4PMBDE101	2,2',4,5,5'-Pentabromo-4'-methoxydiphenyl ether	1.2 ml 50 µg/ml
4PMBDE103	2,2',4,5',6-Pentabromo-4'-methoxydiphenyl ether	1.2 ml 50 µg/ml

MASS-LABELLED METHOXY-BROMINATED DIPHENYL ETHERS

Catalogue Number	Product (nonane solution)	Qty/Conc
M6MBDE47	2,2',4,4'-Tetrabromo-6-methoxy[¹³ C ₁₂]diphenyl ether	1.2 ml 50 µg/ml
M6PMBDE100	2,2',4,4',6-Pentabromo-6'-methoxy[¹³ C ₁₂]diphenyl ether	1.2 ml 50 µg/ml

MASS-LABELLED HYDROXY-BROMINATED DIPHENYL ETHERS

Catalogue Number	Product (methanol solution)	Qty/Conc
M6HBDE47	2,2',4,4'-Tetrabromo-6-hydroxy[¹³ C ₁₂]diphenyl ether	1.2 ml 50 µg/ml
M6PHBDE100	2,2',4,4',6-Pentabromo-6'-hydroxy[¹³ C ₁₂]diphenyl ether	1.2 ml 50 µg/ml

Please contact your local distributor or info@well-labs.com for pricing and delivery.

AND...Please continue to visit our website (www.well-labs.com) for a complete listing of new product releases.

NOTE: *In order to emphasize their relationship to the corresponding PBDE, these compounds have been numbered based on the diphenyl ether as the parent molecule with bromines retaining their BDE numbers. The methoxy and hydroxy groups are treated as additional substituents and listed alphabetically.*

