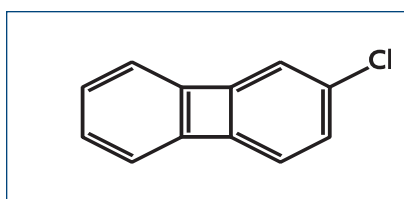




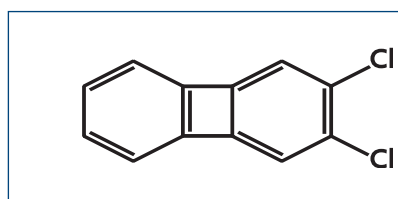
## NEW PRODUCTS

### CHLORINATED BIPHENYLENES; NATIVE AND MASS-LABELLED

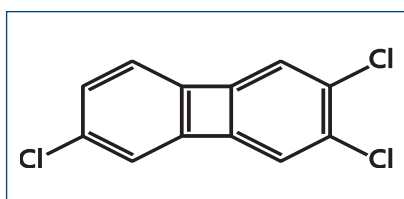
In several studies, **Chlorinated Biphenylenes (PCBPs)** have been reported as environmental contaminants resulting from *PCB* fires. In some instances, **PCBP** levels were estimated to be ten times higher than those of the accompanying *chlorinated dibenzofurans (PCDFs)*. It is possible that **PCBPs** are formed under conditions of uncontrolled, and essentially incomplete, combustion of *PCBs*.



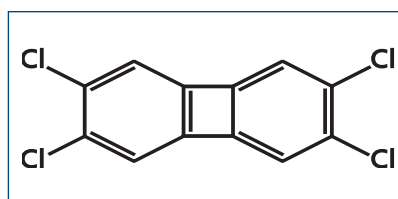
**CBP-2**



**CBP-23**



**CBP-236**



**CBP-2367**

A long-standing concern with **PCBPs** lies in the fact that, in microsomal enzyme studies, *2,3,6,7-tetrachlorobiphenylene* has a similar potency to that of *2,3,7,8-TCDD* in its toxicological effects. They thus present a potentially serious health risk. However, the characterization and quantification of **PCBPs** in the environment have been impeded by the lack of analytical standards.

In an effort to redress this situation, **WELLINGTON** has added **1 mass-labelled** and **4 native chlorinated biphenylenes** to our product line. In addition, solutions of the 4 native biphenylenes are available in DMSO for those interested in performing other studies (eg. toxicological) where DMSO would be a more suitable solvent.

## NATIVE CHLORINATED BIPHENYLENES (PCBPs)

Catalogue Number	Product (nonane solution)	Qty/Conc
<b>CBP-2</b>	2-Chlorobiphenylene	1.2 ml 50 µg/ml
<b>CBP-23</b>	2,3-Dichlorobiphenylene	1.2 ml 50 µg/ml
<b>CBP-236</b>	2,3,6-Trichlorobiphenylene	1.2 ml 50 µg/ml
<b>CBP-2367</b>	2,3,6,7-Tetrachlorobiphenylene	1.2 ml 50 µg/ml

## MASS-LABELLED CHLORINATED BIPHENYLENE

Catalogue Number	Product (nonane solution)	Qty/Conc
<b>MCBP-2367</b>	2,3,6,7-Tetrachloro[ <sup>13</sup> C <sub>12</sub> ]biphenylene	1.2 ml 50 µg/ml

## NATIVE CHLORINATED BIPHENYLENES (PCBPs) in DMSO

Catalogue Number	Product (DMSO solution)	Qty/Conc
<b>CBP-2-D</b>	2-Chlorobiphenylene	1.2 ml 1 x 10 <sup>-4</sup> M
<b>CBP-23-D</b>	2,3-Dichlorobiphenylene	1.2 ml 1 x 10 <sup>-4</sup> M
<b>CBP-236-D</b>	2,3,6-Trichlorobiphenylene	1.2 ml 1 x 10 <sup>-4</sup> M
<b>CBP-2367-D</b>	2,3,6,7-Tetrachlorobiphenylene	1.2 ml 1 x 10 <sup>-4</sup> M

All of these products are in stock and available for immediate shipping.

For pricing information please contact the distributor that serves your area,  
or by e-mail at [info@well-labs.com](mailto:info@well-labs.com)

Visit our website at [www.well-labs.com](http://www.well-labs.com) for listings of all our new products.

