



August 10 2004

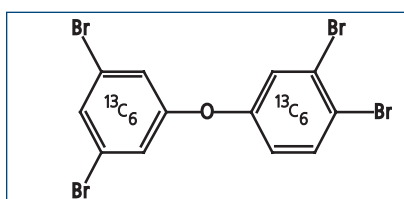
PBDE UPDATE

NEW MASS-LABELLED POLYBROMINATED DIPHENYL ETHERS (MBDEs)

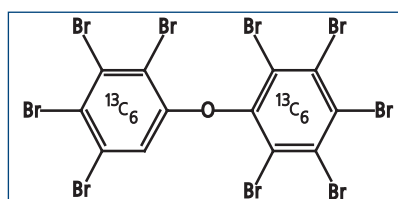
Analytical techniques for the detection of *polybrominated diphenyl ethers* (PBDEs) have evolved sufficiently to allow the analysis of the complex mixture of BDE congeners present in a wide variety of environmental sample matrices.

Recently, particular concern has been paid to the presence, and fate, of the higher brominated congeners in the environment, especially the decabrominated diphenyl ether, **BDE-209**.

Through our discussions with clients and others involved in the field, it became apparent that there is still much need for additional *mass-labelled BDEs* for potential use as either alternative surrogates or internal standards.



MBDE-79



MBDE-206

In response, **WELLINGTON** has now completed the syntheses of two new mass-labelled congeners, namely a *tetra* and a *nona* brominated diphenyl ether.

An updated list of our mass-labelled and native PBDEs is attached. Please contact your local distributor or info@well-labs.com for pricing and delivery.

AND...Please continue to visit our website (www.well-labs.com) for a complete listing of new product releases.

NATIVE BROMINATED DIPHENYL ETHERS (PBDEs)

	Catalogue Number	Product (nonane solution)	Qty/Conc	
NEW	BDE-1	2-Bromodiphenyl ether	1.2 ml	50 µg/ml
NEW	BDE-2	3-Bromodiphenyl ether	1.2 ml	50 µg/ml
	BDE-3	4-Bromodiphenyl ether	1.2 ml	50 µg/ml
	BDE-7	2,4-Dibromodiphenyl ether	1.2 ml	50 µg/ml
	BDE-15	4,4'-Dibromodiphenyl ether	1.2 ml	50 µg/ml
	BDE-17	2,2',4-Tribromodiphenyl ether	1.2 ml	50 µg/ml
	BDE-28	2,4,4'-Tribromodiphenyl ether	1.2 ml	50 µg/ml
	BDE-47	2,2',4,4'-Tetrabromodiphenyl ether	1.2 ml	50 µg/ml
	BDE-49	2,2',4,5'-Tetrabromodiphenyl ether	1.2 ml	50 µg/ml
NEW	BDE-54	2,2',6,6'-Tetrabromodiphenyl ether	1.2 ml	50 µg/ml
	BDE-66	2,3',4,4'-Tetrabromodiphenyl ether	1.2 ml	50 µg/ml
	BDE-71	2,3',4',6-Tetrabromodiphenyl ether	1.2 ml	50 µg/ml
	BDE-77	3,3',4,4'-Tetrabromodiphenyl ether	1.2 ml	50 µg/ml
	BDE-85	2,2',3,4,4'-Pentabromodiphenyl ether	1.2 ml	50 µg/ml
	BDE-99	2,2',4,4',5-Pentabromodiphenyl ether	1.2 ml	50 µg/ml
	BDE-100	2,2',4,4',6-Pentabromodiphenyl ether	1.2 ml	50 µg/ml
	BDE-126	3,3',4,4',5-Pentabromodiphenyl ether	1.2 ml	50 µg/ml
	BDE-138	2,2',3,4,4',5'-Hexabromodiphenyl ether	1.2 ml	50 µg/ml
	BDE-153	2,2',4,4',5,5'-Hexabromodiphenyl ether	1.2 ml	50 µg/ml
	BDE-154	2,2',4,4',5,6'-Hexabromodiphenyl ether	1.2 ml	50 µg/ml
	BDE-156	2,3,3',4,4',5-Hexabromodiphenyl ether	1.2 ml	50 µg/ml
NEW	BDE-169	3,3',4,4',5,5'-Hexabromodiphenyl ether	1.2 ml	50 µg/ml
	BDE-183	2,2',3,4,4',5',6-Heptabromodiphenyl ether	1.2 ml	50 µg/ml
	BDE-184	2,2',3,4,4',6,6'-Heptabromodiphenyl ether	1.2 ml	50 µg/ml
	BDE-191*	2,3,3',4,4',5',6-Heptabromodiphenyl ether	1.2 ml	50 µg/ml
	BDE-196*	2,2',3,3',4,4',5,6'-Octabromodiphenyl ether	1.2 ml	50 µg/ml
	BDE-197*	2,2',3,3',4,4',6,6'-Octabromodiphenyl ether	1.2 ml	50 µg/ml
	BDE-206*	2,2',3,3',4,4',5,5',6-Nonabromodiphenyl ether	1.2 ml	50 µg/ml
	BDE-207*	2,2',3,3',4,4',5,6,6'-Nonabromodiphenyl ether	1.2 ml	50 µg/ml
	BDE-209*	Decabromodiphenyl ether	1.2 ml	50 µg/ml

* Toluene solution



MASS-LABELLED BROMINATED DIPHENYL ETHERS

Catalogue Number	Product (nonane solution)	Qty/Conc
MBDE-3	4-Bromo[¹³ C ₁₂]diphenyl ether	1.2 ml 50 µg/ml
MBDE-15	4,4'-Dibromo[¹³ C ₁₂]diphenyl ether	1.2 ml 50 µg/ml
MBDE-28	2,4,4'-Tribromo[¹³ C ₁₂]diphenyl ether	1.2 ml 50 µg/ml
MBDE-47	2,2',4,4'-Tetrabromo[¹³ C ₁₂]diphenyl ether	1.2 ml 50 µg/ml
NEW MBDE-77	3,3',4,4'-Tetrabromo[¹³ C ₁₂]diphenyl ether	1.2 ml 50 µg/ml
NEW MBDE-79	3,3',4,5'-Tetrabromo[¹³ C ₁₂]diphenyl ether	1.2 ml 50 µg/ml
MBDE-99	2,2',4,4',5-Pentabromo[¹³ C ₁₂]diphenyl ether	1.2 ml 50 µg/ml
NEW MBDE-100	2,2',4,4',6-Pentabromo[¹³ C ₁₂]diphenyl ether	1.2 ml 50 µg/ml
NEW MBDE-126	3,3',4,4',5-Pentabromo[¹³ C ₁₂]diphenyl ether	1.2 ml 50 µg/ml
MBDE-138	2,2',3,4,4',5'-Hexabromo[¹³ C ₁₂]diphenyl ether	1.2 ml 50 µg/ml
MBDE-139	2,2',3,4,4',6-Hexabromo[¹³ C ₁₂]diphenyl ether	1.2 ml 50 µg/ml
MBDE-153	2,2',4,4',5,5'-Hexabromo[¹³ C ₁₂]diphenyl ether	1.2 ml 50 µg/ml
MBDE-154	2,2',4,4',5,6'-Hexabromo[¹³ C ₁₂]diphenyl ether	1.2 ml 50 µg/ml
NEW MBDE-169	3,3',4,4',5,5'-Hexabromo[¹³ C ₁₂]diphenyl ether	1.2 ml 50 µg/ml
MBDE-183	2,2',3,4,4',5',6-Heptabromo[¹³ C ₁₂]diphenyl ether	1.2 ml 50 µg/ml
MBDE-197*	2,2',3,3',4,4',6,6'-Octabromo[¹³ C ₁₂]diphenyl ether	1.2 ml 50 µg/ml
NEW MBDE-206*	2,2',3,3',4,4',5,5',6-Nonabromo[¹³ C ₁₂]diphenyl ether	1.2 ml 50 µg/ml
MBDE-207*	2,2',3,3',4,4',5,6,6'-Nonabromo[¹³ C ₁₂]diphenyl ether	1.2 ml 50 µg/ml
MBDE-209*	Decabromo[¹³ C ₁₂]diphenyl ether	1.2 ml 25 µg/ml

* Toluene solution

