

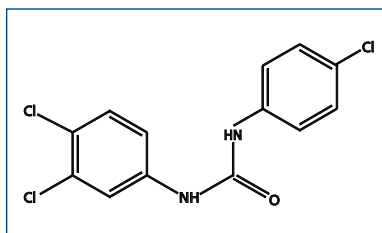


June 12 2006

## NEW PRODUCTS

### TRICLOCARBAN; NATIVE AND MASS-LABELLED

Triclocarban (**TCC**) and triclosan (**TCS**) are antimicrobial additives used in various personal care products. Whereas triclosan is being studied extensively, the environmental fate of triclocarban is relatively unknown. Recent developments in LC/MS methods has allowed for the analysis of TCC utilizing isotope dilution techniques.



Structure of Triclocarban [N-(4-chlorophenyl)-N'-(3,4-dichlorophenyl)-urea].

The amount of Triclocarban in the environment, and its potential impact, is not fully understood as yet. To further support the study of this compound in the environment, **WELLINGTON** has now added native and mass-labelled Triclocarban to our product line.

### TRICLOCARBAN

Catalogue Number	Product (methanol solution)	Qty/Conc
TCC	N-(4-chlorophenyl)-N'-(3,4-dichlorophenyl)-urea	1.2 ml 50 µg/ml

### MASS-LABELLED TRICLOCARBAN

Catalogue Number	Product (methanol solution)	Qty/Conc
MTCC	N-(4-chloro[ <sup>13</sup> C <sub>6</sub> ]phenyl)-N'-(3,4-dichloro[ <sup>13</sup> C <sub>6</sub> ]phenyl)-[ <sup>13</sup> C]urea	1.2 ml 50 µg/ml

Please contact your local distributor or [info@well-labs.com](mailto:info@well-labs.com) for pricing and delivery.

AND...Please continue to visit our website ([www.well-labs.com](http://www.well-labs.com)) for a complete listing of new product releases.